

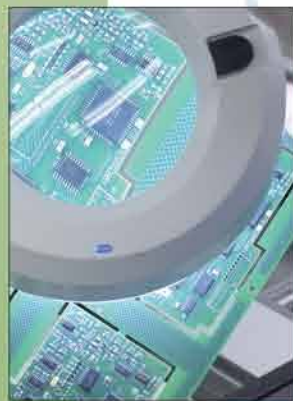
The Region has a solid track record of effective and well managed water resource programs.

The cost of completing the Draft and Final Environmental Impact Statement is estimated at \$6.87 million. The majority of funds, \$3.97 million, will be provided by local water resource agencies. Congress has appropriated \$1.46 million to the Bureau of Reclamation for the project since 2005. The remainder of needed federal funds is \$1.44 million.



Project Component	Total Cost	Local Funding	Reclamation Funding
Water Supply Feasibility Study (WSFS)	\$1.3 million	\$1.2 million	\$100,000
Environmental Impact Statement (EIS)	\$6.87 million	\$3.97 million	\$2.9 million**

**Reclamation received \$1.46 million between 2005 and 2010. Balance requested for Reclamation = \$1.44 million



Washington County, Oregon

Washington County, Oregon is the second-fastest growing county in the state with a population of more than 510,000. The number of jobs on the westside has more than doubled in the last 20 years, reaching over 250,000. The westside has outpaced the rest of the Portland metro region in economic development and is a net exporter of earnings to the state.

“Diversified water sources are vital to ensure a safe, secure and sustainable water supply for the entire region.”

Mayor Denny Doyle, City of Beaverton

Contacts

Washington County

155 N. First Avenue, Room 300
Hillsboro, Oregon 97124
Phone: (503) 846-8681, Fax: (503) 846-4545

Tom Brian, Chairman
Washington County Board of Commissioners
and Clean Water Services Board of Directors

Washington, D.C. Contact

Thane Young
Van Scoyoc Associates
Phone: (202) 638-1950
tyoung@vsadc.com

Clean Water Services

2550 SW Hillsboro Highway
Hillsboro, Oregon 97123
Phone: (503) 681-3600, Fax: (503) 681-3603
www.CleanWaterServices.org

Bill Gaffi, General Manager
Phone: (503) 681-3600
gaffib@CleanWaterServices.org

Tom VanderPlaat
Water Supply Project Manager
Phone: (503) 681-5107
vanderplaatt@CleanWaterServices.org

Mark Jockers
Government & Public Affairs Mgr
Phone: (503) 681-4450
jockersm@CleanWaterServices.org

Watershed Project Partners

City of Beaverton	Denny Doyle, Mayor	(503) 526-2497
City of Forest Grove	Pete Truax, Mayor	(503) 359-3200
City of Hillsboro	Jerry Willey, Mayor	(503) 681-6219
Lake Oswego Corp	Jeff Ward, Manager	(503) 636-1422
City of Tigard	Craig Dirksen, Mayor	(503) 639-4171
City of Tualatin	Lou Ogden, Mayor	(503) 692-2000
Clean Water Services	Tom Brian, Chair	(503) 846-8681
Tualatin Valley Irrigation District	Jim Love, Chair	(503) 357-3118
Tualatin Valley Water District	Richard Burke, Chair	(503) 642-1511
US Bureau of Reclamation	Robert Schattin, Activity Manager, Reclamation Pacific Northwest Regional Office – Boise ID	(208) 378-5090
US Army Corps of Engineers	James McMillan, Project Manager	(503) 808-4376

“This project is essential for meeting the long-term water supply needs of our community.”

Mayor Jerry Willey, City of Hillsboro



Sustaining our Economy,
Watershed and
Community

Congressional Funding Request



Washington County, Oregon

Washington County Communities and Water Agencies Request \$1.44 Million to Sustain Regional Growth and Livability

The Water Supply Partners, made up of Washington County cities and water agencies, are requesting \$1.44 million in FY 2011 for the Bureau of Reclamation to complete the Environmental Impact Statement (EIS) for the Tualatin Basin Water Supply Project. Total cost of the EIS is \$6.87 million, of which local governments are contributing \$3.97 million, or more than 55%. Federal authorization for this project was secured in the "Energy and Water Development Act, 2004" (P.L. 108-137).



Since 2005, federal appropriations of \$1,460,000 have assisted in funding the EIS for this Project. It is critical that the balance of funding is secured in FY 2011 to meet the community's growing municipal, industrial, agricultural and environmental water needs and sustain the economic health of the region.



"The region's future is tied to our ability to plan for and deliver fresh, clean water to every home, farm and business while restoring flow to the river."

Chair Tom Brian, Washington County Commission

Integration of Safety of Dams Program and Water Supply Project

Improving public safety and meeting the region's critical future water needs are central to the Tualatin Basin Water Supply Project. The Partners and Tualatin Project repayment contractors are working closely with Reclamation to integrate the federal government's Safety of Dams Program with the Water Supply Project to make the facility safer sooner. Integration will help ensure the necessary dam safety improvements are promptly addressed; the region's long-term water needs are met; and existing repayment contractors are protected.

Supply Options to be compared in EIS

The Tualatin Basin Water Supply Project seeks to secure 50,000 acre-feet of needed water to meet growing needs of families, farms, factories and fish. An Environmental Impact Statement (EIS) is being completed to examine alternatives to meet this need:

A 40' Dam Raise Alternative: A proposed 40-foot raise of Scoggins Dam on Hagg Lake with raw water pipeline pumpback

B Multiple Source Option Alternative: This includes up to a 25-foot raise of Scoggins Dam, a raw water pipeline pumpback, and the expansion of Willamette River Water Treatment Plant in Wilsonville.

Both alternatives include aggressive conservation targets for homes and businesses, wastewater reuse, and working with farmers to secure in-stream water rights for fish.



"Long-term water resource planning is critical to maintaining a positive business operating environment and to sustain conditions suitable for further investment."

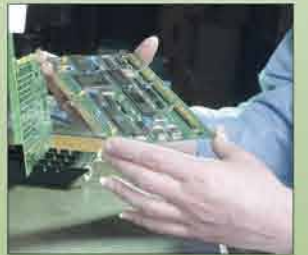
Rick Kroon, Director of Corporate Environmental, Health & Safety, Intel Corporation

Smart Investments Now will Benefit Entire Region for Generations

The Tualatin Basin Water Supply Project is an investment in the health and sustainability of the region's watershed, economy, and community. Direct benefits of the project include:

Economic Development

Washington County is the economic engine of the state, generating more state revenue than is returned to the area. A reliable, secure and cost-effective water supply is essential to the continued economic health of the region.



Watershed Health

Sustaining the overall health of the Tualatin River watershed is a primary goal of local water resource agencies. Adequate instream flow is a major factor in maintaining water quality and fish habitat. Two fish species in the Tualatin River are listed as threatened under the federal Endangered Species Act (ESA). Restoration of fish habitat will require more water.



Community Livability

Quality of life is directly related to the region's economy and sustainability. Residents of Washington County value the beauty, quality and recreational opportunities afforded by the area's natural environment. The region must continue to maintain and enhance a distinctive quality of life to attract talented workers.



Other Project benefits include:



- Agricultural irrigation
- Water conservation
- Reliable, safe and cost-effective water supply
- Improved fish and wildlife habitat
- River and tributary flow restoration
- Flood management
- Expanded recreational use
- Restoration of ESA-listed Spring Chinook and Steelhead